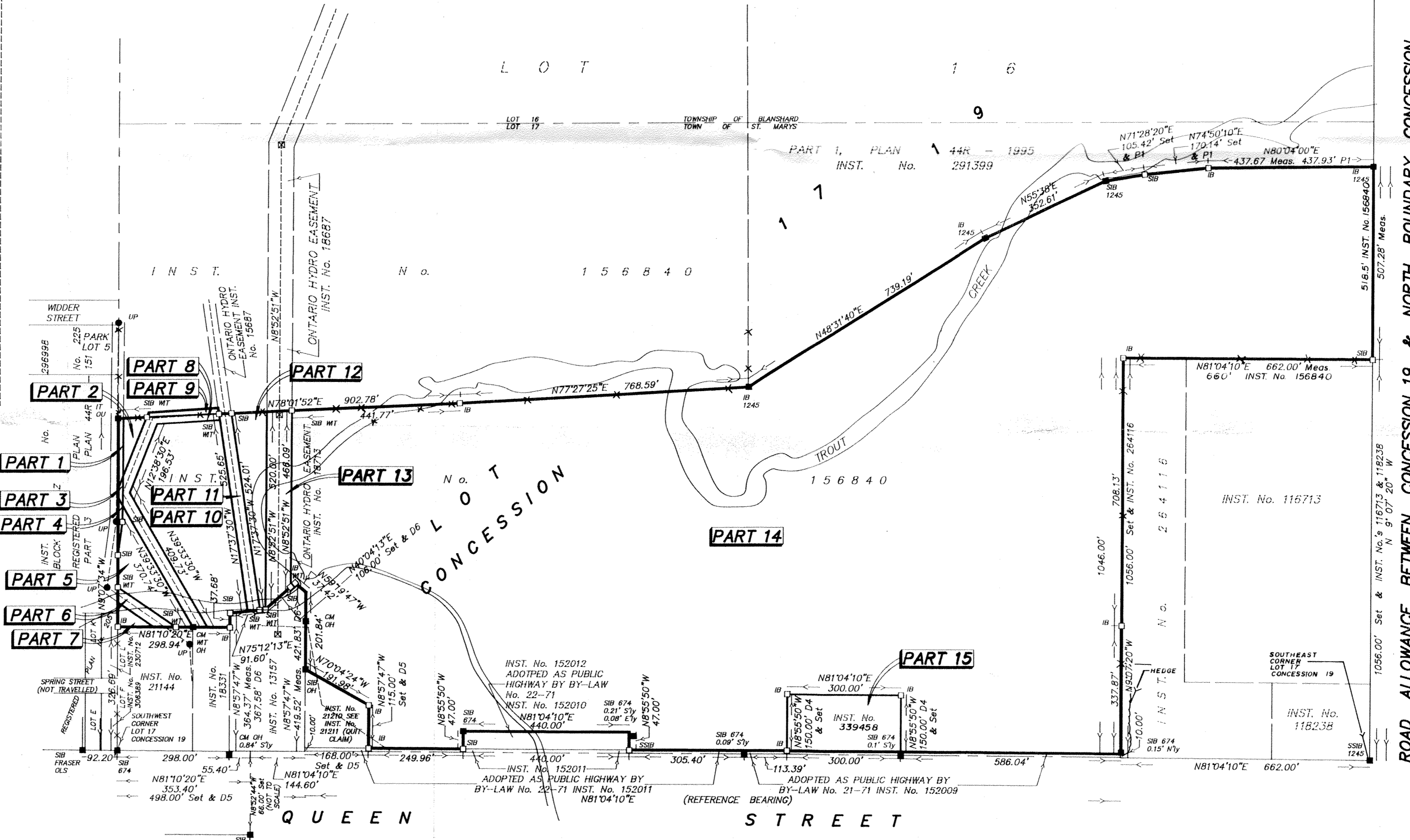
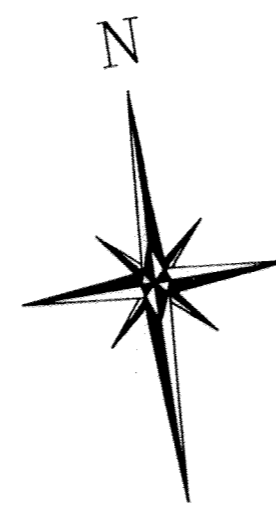


ENLARGEMENT
SCALE 1" = 60'



PARTS SCHEDULE					
PART	LOT	CONCESSION	INST. No.	SUBJECT TO INST. No.	AREA AC.
1	PART OF 17	19	156840	17538	0.052
2	PART OF 17	19	156840		0.106
3	PART OF 17	19	156840	17538 & 101064	0.015
4	PART OF 17	19	156840	17538	0.027
5	PART OF 17	19	156840		0.568
6	PART OF 17	19	156840	17538	0.115
7	PART OF 17	19	156840		0.071
8	PART OF 17	19	156840	101064	0.518
9	PART OF 17	19	156840	101064	0.071
10	PART OF 17	19	156840		2.433
11	PART OF 17	19	156840	101064	0.398
12	PART OF 17	19	156840		0.644
13	PART OF 17	19	156840	18713	0.747
14	PART OF 17	19	156840		59.498
15	PART OF 17	19	339458		1.033

PLAN 44R-2841
RECEIVED AND DEPOSITED
DATED October 19, 1993
DONALD W. J. McNEIL
DONALD W. J. McNEIL
Ontario Land Surveyor
for DONALD W. J. McNEIL LIMITED

CAUTION: THIS IS NOT A PLAN OF SUBDIVISION WITHIN THE MEANING OF THE PLANNING ACT.

PLAN OF SURVEY
ON PART OF LOT 17
CONCESSION 19
FORMERLY IN THE TOWNSHIP OF BLANSHARD
NOW IN THE TOWN OF ST. MARYS
COUNTY OF PERTH

THIS DOCUMENT IS THE PROPERTY OF THE PERTH COUNTY REGISTRY OFFICE

SCALE 1" = 200'

DONALD W. J. McNEIL LIMITED
ONTARIO LAND SURVEYOR

1993

NOTES
1. Bearings are referred to the northerly limit of Queen Street having an astronomic bearing of N81°04'10"E as shown on a previous survey by F.J.S. Pearce Ontario Land Surveyor (File No. 1G-17-19 B.L.S.T.M.).
2. Position of Trout Creek was taken from Ontario Base Maps and was not located by field survey.

- LEGEND
- - found monument
 - - planted monument
 - IB - iron bar
 - IBØ - round iron bar
 - SIB - standard iron bar
 - SSIB - short standard iron bar
 - CM - concrete monument
 - CC - cut cross
 - WIT - witness monument
 - 1245 - by Donald W.J. McNeil O.L.S.
 - 674 - by F.J.S. Pearce O.L.S.
 - AGM - by Archibald, Gray, & McKay O.L.S.
 - OU - Origin Unknown
 - RP - denotes Registered Plan
 - OH - by Ontario Hydro
 - UP - denotes utility pole
 - P1 - denotes Plan 44R-1995
 - D1 - denotes Instrument Number 17538
 - D2 - denotes Instrument Number 101064
 - D3 - denotes Instrument Number 18713
 - D4 - denotes Instrument Number 339458
 - D5 - denotes Instrument Number 21210
 - D6 - denotes Instrument Number 13157
 - ⋈ - denotes post & wire fence

SURVEYOR'S CERTIFICATE
I CERTIFY THAT:
1. This survey and plan are correct and in accordance with the Survey Act, the Registry Act, and the regulations made thereunder.
2. The survey was completed on the 19th day of October, 1993.
October 19, 1993 per Donald W. J. McNeil O.L.S.
DONALD W. J. McNEIL, ONTARIO LAND SURVEYOR

DONALD W. J. McNEIL LIMITED
ONTARIO LAND SURVEYOR
(519) 271-7952
FAX No. (519) 271-3545
160 ERIE STREET, STRATFORD, ONT.

CAUTION: AutoCAD DRAWING
ALL REVISIONS ARE TO BE MADE ON DISK
DRAWN BY Mark E. Whittemore
CHECKED BY D. McNEIL O.L.S.
FILE No. 93-4888 (L)