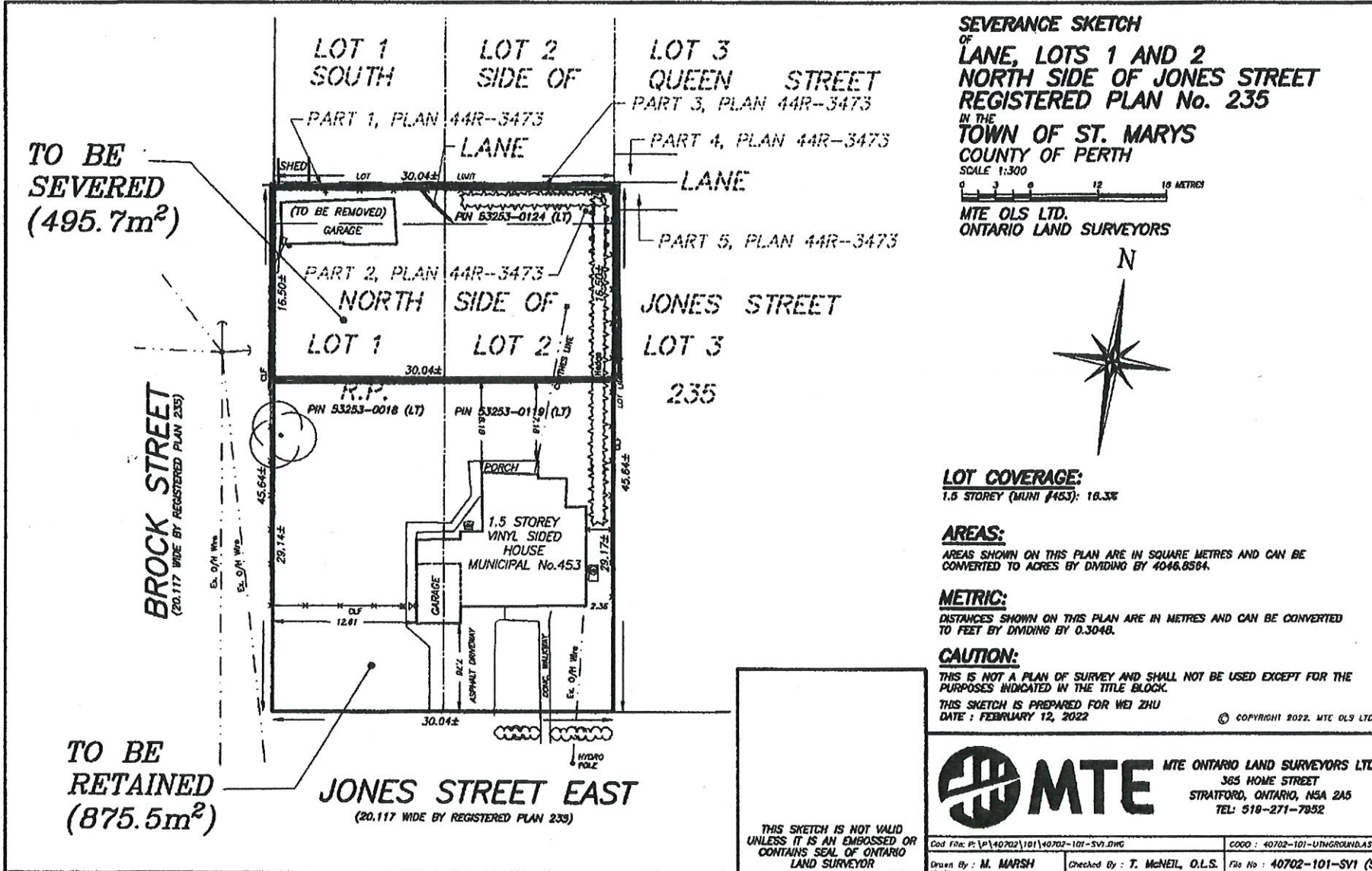


SCHEDULE B



**SEVERANCE SKETCH**  
 OF  
**LANE, LOTS 1 AND 2**  
**NORTH SIDE OF JONES STREET**  
**REGISTERED PLAN No. 235**  
 IN THE  
**TOWN OF ST. MARYS**  
**COUNTY OF PERTH**

SCALE 1:300  
 0 3 6 9 12 15 METRES  
**MTE OLS LTD.**  
**ONTARIO LAND SURVEYORS**



**LOT COVERAGE:**  
 1.5 STOREY (MUNI #453): 16.3%

**AREAS:**  
 AREAS SHOWN ON THIS PLAN ARE IN SQUARE METRES AND CAN BE CONVERTED TO ACRES BY DIVIDING BY 4046.8564.

**METRIC:**  
 DISTANCES SHOWN ON THIS PLAN ARE IN METRES AND CAN BE CONVERTED TO FEET BY DIVIDING BY 0.3048.

**CAUTION:**  
 THIS IS NOT A PLAN OF SURVEY AND SHALL NOT BE USED EXCEPT FOR THE PURPOSES INDICATED IN THE TITLE BLOCK.  
 THIS SKETCH IS PREPARED FOR WEI ZHU  
 DATE: FEBRUARY 12, 2022 © COPYRIGHT 2022, MTE OLS LTD.

**MTE** MTE ONTARIO LAND SURVEYORS LTD.  
 365 HOME STREET  
 STRATFORD, ONTARIO, N5A 2A5  
 TEL: 519-271-7852

THIS SKETCH IS NOT VALID UNLESS IT IS AN EMBOSSED OR CONTAINS SEAL OF ONTARIO LAND SURVEYOR

Cad File: P:\P\40702\101\40702-101-SV1.DWG  
 C000: 40702-101-UTINGROUND.ASC  
 Drawn By: M. MARSH  
 Checked By: T. McNEIL, O.L.S.  
 File No: 40702-101-SV1 (S)